



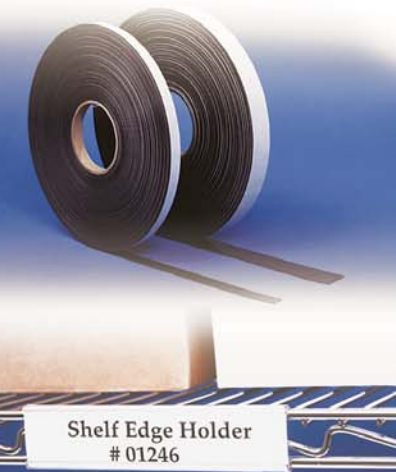
# LABEL HOLDER CATALOG

LOOK TO THE LEADER IN LABEL HOLDERS™

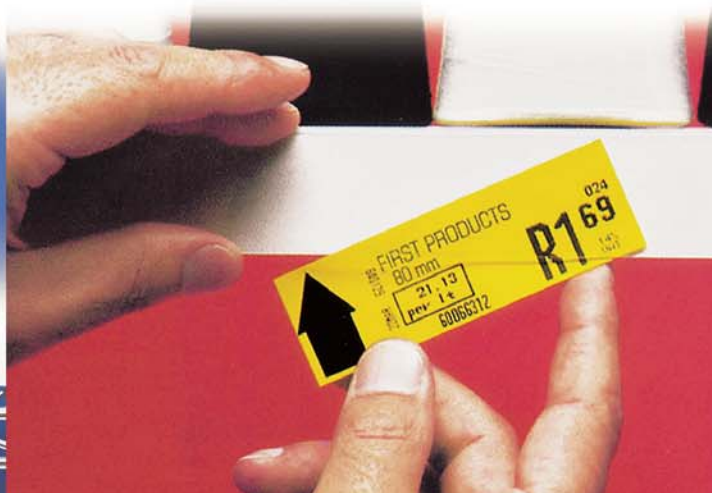


218 MACARTHUR AVENUE, NEW WINDSOR, NY 12553  
TEL: 1-800-242-3919 • FAX: 845-562-2638

[www.aignerindex.com](http://www.aignerindex.com)



Shelf Edge Holder  
# 01246



# Label Holders don't cost...they pay!

**y**ou can't handle materials if you can't find them! Make sure your employees can locate inventory quickly and easily. Specify label holders from Aigner Index. We have the solution for most every labeling need. Aigner label holders are actually management tools that prevent problems before they arise. Whatever the initial investment, you'll receive quick payback in materials, labor, and overall efficiency that includes:

- Ease of normal label changes
- Cost savings of 50% in materials required in eliminating expensive, hard-to-remove self-adhesive labels
- Labor savings to apply and remove self-adhesive labels, plus no more shelf clean-up time.

Experience additional savings by using standard or perforated laser/ink jet compatible insert sheets. These are supplied with simple printing instructions in standard word-processing format and available from Aigner Index for most sizes. You can print neat, professional labels in advance or on an "as needed" basis, in house, at virtually no cost.

Our quality products assure easy-to-read identity, scanning compatibility, and long life durability. Look to the leader in label holders. **Look to Aigner Index.**

## Contents

Hol•Dex® .....	1
Superscan® .....	2
Superscan® Gold .....	2
Premium Quality Job Ticket Holders .....	2
Slip•Strip™ .....	3
Wire•Rac™ .....	3
Wire•Rac Max™ .....	3
Magnetic Cardholders .....	4
Write•On Magnetic Tags .....	4
Magnetic Roll Stock .....	4
Bin•Buddy's™ .....	5
Open•Edge™ .....	5
AngleVision™ Labelholders .....	5
Floor Label System .....	6
Warehouse Aisle Sign Kit .....	6
Hi•Lo® .....	6
Shelf Labeling Strips .....	7
Snap•Label™ .....	7
Adapt•A•Strip™ .....	7
Econo•Holder™ .....	7
Moveable "Shelf" Labelholders .....	8
Shelf•Clip™ .....	8
Mag•Print™ .....	8
Laser/Ink Jet Sheets .....	8
Charged•Card™ .....	inside back cover
Frig•ID™ Laser Sheets .....	inside back cover
Wire•Rac™ Med Label Holders .....	inside back cover
Terms and Conditions .....	inside back cover



**HOL•DEX®** is a patented product, made from sturdy, matte-finished clear plastic that eliminates glare for bar code compatibility. Whether you use the **Self-Adhesive, Removable, Magnetic, or Hook & Loop Backed**, you can rely on **HOL•DEX®** to stay in place.

## self-adhesive



**Call them “remarkable”!** These self-adhesive plastic label holders are ideal for shelves, bins, file cabinets, drawers, panels... anything that can be labeled! **HOL•DEX®** adheres to any clean surface. It will not crack, chip, peel, fade, or fall off!

We use only the finest, longest-lasting foam tape. Apply by removing tape liner and press to surface. Can be used repeatedly simply by changing the paper insert. White paper inserts provided. **CALL US FOR CUSTOM CUT ORDERS.**

## removable

**Brand New product offering!** Our removable (remo) **HOL•DEX®** combines all of the time-tested features of self-adhesive and hook & loop! Uses the finest foam tape with a twist, a removable adhesive system. This allows the holder to be repositioned! Will not fall off any clean, dry, smooth surface. White paper inserts provided. **CALL US FOR CUSTOM CUT ORDERS.**

## magnetic



**This versatile system is truly the next generation for metal shelving, racks, bins, and drawers.** The magnetic backing makes it easy to change label holder location or just the information on the paper inserts. Ideal for organizing all your shelving needs. White paper inserts provided. **CALL US FOR CUSTOM CUT ORDERS.**

## hook & loop backed

**These are the real quick-change artists of the labeling world.** In mere seconds you can change a name, a title, a department designation. Instantly move the entire holder (label and all) to any surface. They can be securely fixed to shelving and most other surfaces. Each label holder is backed by a full-length strip of hook and loop. White paper inserts provided. **CALL US FOR CUSTOM CUT ORDERS.**



Size	Unit	Self-Adhesive Stock #	Price/Box (per inch)	Magnetic Stock #	Price/Box (per inch)	Hook & Loop Stock #	Price/Box (per inch)	Removable Stock #	Price/Box (per inch)	Laser/Ink Jet Inserts Stock #	Price/50 sheets (qty/length)
3/8" x 6"	12	L-41	9.00 (.119)	—	—	—	—	R-41	10.50 (.139)	LI-41-26	18.50 (1,300/8")
1/2" x 6"	12	L-21	10.50 (.142)	M-21	11.50 (.154)	V-21	15.50 (.200)	R-21	11.50 (.154)	LI-21-20	18.50 (1,000/8")
3/4" x 6"	12	L-31	12.15 (.164)	M-31	13.25 (.178)	V-31	18.00 (.245)	R-31	13.25 (.178)	LI-31-12	18.50 (600/8")
1" x 6"	12	L-11	14.00 (.189)	M-11	15.10 (.202)	V-11	19.50 (.265)	R-11	15.10 (.202)	LI-11-10	18.50 (500/8")
1 1/2" x 6"	12	L-71	15.10 (.209)	M-71	20.10 (.275)	V-71	25.00 (.342)	R-71	20.10 (.275)	LI-71-6	18.50 (300/8")
2" x 6"	12	L-51	18.35 (.251)	M-51	27.25 (.368)	V-51	32.75 (.441)	R-51	27.25 (.368)	LI-51-5	18.50 (250/8")
2 1/2" x 6"	12	L-61	19.90 (.272)	M-61	29.50 (.397)	—	—	R-61	29.50 (.397)	LI-61-4	18.50 (200/8")

Standard Boxes: Twelve (12) - 6" length strips with pre-cut white inserts. Holders also available in Red, Lemon, Blue, and Green. Call for pricing and availability.





**Xtra Large Label Holders — Ideal for Pallet Racking.** These tough, extra-large bar code-compatible label holders help prevent damage to valuable bar code information during storage and distribution. They protect against dust, abrasion, humidity, even chemicals, and light. A special matte finish assures accurate bar code scanning...every time! **SUPERSCAN®** is made from a sturdy, matte finished clear plastic to eliminate glare. Choose from self-adhesive, magnetic, or hook & loop backings. Laser/Ink Jet inserts and general printing instructions included. **Backings supplied separately.**

Top Load Stock #	Side Load Stock #	Card Size	Backing	Unit	Price/Box	Laser/Ink Jet Inserts Stock #	Price/50 sheets (qty)
APXT-35	APX-35	3" x 5"	Self-Adhesive	50	28.00	LI-35-4	18.50 (200)
APXT-35M	APX-35M	3" x 5"	Magnetic	50	38.50	LI-35-4	18.50 (200)
APXT-35V	APX-35V	3" x 5"	Hook & Loop	50	52.00	LI-35-4	18.50 (200)
APXT-46	APX-46	4" x 6"	Self-Adhesive	50	33.00	LI-46-2	18.50 (100)
APXT-46M	APX-46M	4" x 6"	Magnetic	50	48.00	LI-46-2	18.50 (100)
APXT-46V	APX-46V	4" x 6"	Hook & Loop	50	68.00	LI-46-2	18.50 (100)
-	APX-57	4¾" x 7¼"	Self-Adhesive	25	29.00	LI-57-2	18.50 (100)
-	APX-57M	4¾" x 7¼"	Magnetic	25	37.00	LI-57-2	18.50 (100)
-	APX-57V	4¾" x 7¼"	Hook & Loop	25	54.00	LI-57-2	18.50 (100)
-	APX-911	8½" x 11"	Self-Adhesive	25	54.00	LI-91-1	12.50 (50)
-	APX-911M	8½" x 11"	Magnetic	25	69.00	LI-91-1	12.50 (50)
-	APX-911V	8½" x 11"	Hook & Loop	25	99.00	LI-91-1	12.50 (50)

CUSTOM SIZES AVAILABLE! Standard Box: as shown above with UNATTACHED backing materials included in each box. NOTE: *Side Load*—card loads from smaller dimension. *Top Load*—card loads from larger dimension.

## superscan® gold

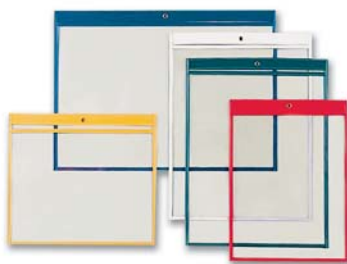
**Just when you thought we couldn't improve on the best!** SUPERSCAN® GOLD is designed with a press-on adhesive backing or full magnetic backing! All three styles provide the end user a total ease of application. **FINISH IS BAR CODE COMPATIBLE.** Laser/Ink Jet insert sheets included.



Size	Unit	Self-Adhesive Stock #	Price/Box	Magnetic Stock #	Price/Box	Top-Load Stock #	Price/Box	Laser/Ink Jet Inserts Stock #	Price/50 sheets (qty)
2" x 3½"	50	SS-32	23.00	SSM-32	37.00	SST-32	24.50	LI-32-10	18.50 (500)
3" x 5"	50	SS-35	33.00	SSM-35	53.00	SST-35	35.00	LI-35-4	18.50 (200)
4" x 6"	50	SS-46	39.50	SSM-46	67.00	SST-46	42.00	LI-46-2	18.50 (100)
4" x 8"	50	SS-48	57.00	-	-	-	-	LI-48-2	18.50 (100)
5" x 7"	50	SS-57	52.00	-	-	-	-	LI-57SS-2	18.50 (100)
5" x 8"	50	SS-58	66.00	-	-	-	-	LI-58-2	18.50 (100)
8½" x 11"	50	SS-911	99.50	-	-	-	-	LI-91-1	12.50 (50)
9" x 12"	50	SS-912	105.00	-	-	-	-	LI-91-1	12.50 (50)

CUSTOM SIZES AVAILABLE! Standard Box: as shown. NOTE: *Side load*—card loads from smaller dimension.

## premium quality job ticket holders



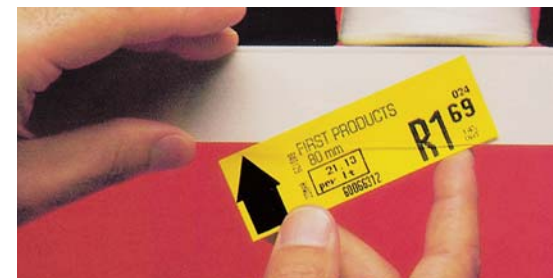
**Protect and secure all important documents.** These very popular, all-purpose holders protect and preserve work orders, production schedules, inventory cards, and much more from excessive handling, wear, and the elements. Made from a rigid clear vinyl for easy visibility from either side. High-quality stitched edges for longer life. All holders have a center reinforced brass eyelet for hanging. Available in standard black or special-ordered in seven (7) **COLORS** for color coding. **Custom Sizes Available.** Can be further customized with self-adhesive, magnetic, removable (remo), or hook/loop backings at an upcharge.

Stock #	Color	Size	Unit	Price/Box
JTH-0609	Black	6" x 9"	25	58.50
JTH-0912	Black	9" x 12"	25	69.50
JTH-1114	Black	11" x 14"	10	49.00

Optional Colored Stitching: (non-stock) Blue, Green, Red, Teal, White, Yellow, Burgundy

**Our most versatile self-adhesive label/document holder system. Thin profile, top or bottom loading design!** Stick our Slip-Strip™ label holders anywhere you need to mount or display bar codes, messages, or any other information. “Slip” label, sign, or message through the open edge of the holder for quick and easy labeling and label changes. Holds all sizes and types of labels, even up to letter size! Slip-Strip™ is made of heavy duty PVC with bar code compatible clear face, white backing, and an aggressive, long-lasting adhesive. Can be easily cut with scissors to any length. **NO** inserts included.

Stock #	Size	Unit	Price/Pkg. (per inch)	Laser/Ink Jet Inserts Stock #	Price/ 50 sheets (qty. / length)
<b>36" Lengths</b>					
360756	¾" x 36"	6	29.00 (.130)	LIS-758-12	18.50 (600/8")
361006	1" x 36"	6	30.80 (.140)	LIS-108-10	18.50 (500/8")
361256	1½" x 36"	6	31.70 (.145)	LIS-128-8	18.50 (400/8")
361506	1½" x 36"	6	33.80 (.155)	LIS-158-7	18.50 (350/8")
362006	2" x 36"	6	38.20 (.180)	LIS-208-5	18.50 (250/8")
363006	3" x 36"	6	49.20 (.230)	LIS-308-3	18.50 (150/8")
<b>48" Lengths</b>					
480756	¾" x 48"	6	37.70 (.130)	LIS-758-12	18.50 (600/8")
481006	1" x 48"	6	39.20 (.140)	LIS-108-10	18.50 (500/8")
481256	1½" x 48"	6	40.40 (.145)	LIS-128-8	18.50 (400/8")
481506	1½" x 48"	6	43.40 (.155)	LIS-158-7	18.50 (350/8")
482006	2" x 48"	6	48.70 (.180)	LIS-208-5	18.50 (250/8")
483006	3" x 48"	6	65.40 (.230)	LIS-308-3	18.50 (150/8")



CUSTOM LENGTHS AVAILABLE! COLORS AND OTHER BACKINGS: Special Order Only.

## wire•rac™

**Finally, a solution for labeling wire shelving.** Before this product, labeling wire shelving wasn't easy. But finally, this flexible, plastic label holder makes it a breeze. Just snap it on for a perfect fit. Snap it off to reposition. 1¼" high label or insert loads from top (or bottom) and is **protected** by a **bar code compatible**, clear cover. Retrofits major manufacturers' shelving with standard 1¼" - 1½" face. White inserts included. **CALL US FOR CUSTOM CUT ORDERS.**



Stock #	Size	Backing	Unit	Price/Pkg.
WR-1253	1⅞" x 3"	Snap-On	25	19.50
WR-1256	1⅞" x 6"	Snap-On	25	33.25
WR-1212	1⅞" x 12"	Snap-On	12	29.75
WR-1224	1⅞" x 24"	Snap-On	6	29.75

Price Per Inch
.25

CUSTOM LENGTHS AVAILABLE! Standard Box: as shown above.

Laser/Ink Jet Inserts	Size	Unit	Quantity	Price/Pkg.
LI-120-8	1¼" x 6"	50 sheets	400 inserts	18.50

**A NEW solution for labeling wire shelving with mats.** Our “Max” product has all the same properties as our conventional Wire•Rac™ label holder, but engineered to retrofit major manufacturers' “High Moisture Environment Shelving Units” similar to MetroMax Q™. Just snap it on for a perfect fit. Snap it off to reposition. 1¼" high label or

Stock #	Size	Backing	Unit	Price/Pkg.
WRM-1253	1¼" x 3"	Snap-on	25	27.50
<b>Laser/Ink Jet Sheets</b>				
LI-123-8	1¼" x 3"	50 sheets	800 inserts	18.50

CUSTOM LENGTHS AVAILABLE! SPECIAL ORDER ONLY.

insert loads from top and is **protected by a bar code compatible**, clear cover. Clear Only. White Inserts Provided.

## wire•rac max™



# magnetic cardholders

**A traditional favorite for metal racks and shelves.** Labeling has never been easier using our Magnetic "C" Channel Cardholders. Heavy-duty (.060" thick) magnetic material assures total adhesion in any application. Perfect for any office, library, or warehouse metal shelf or rack. **BLACK ONLY.** White inserts provided.



Length	Unit	1/2" Width Stock #	Price/ Pkg.	3/4" Width Stock #	Price/ Pkg.	1" Width Stock #	Price/ Pkg.	2" Width Stock #	Price/ Pkg.	3" Width Stock #	Price/ Pkg.
2"	25	MC502	6.75	MC702	8.25	MC102	9.50	–	–	–	–
3"	25	MC503	8.00	MC703	11.00	MC103	12.25	MC203	16.65	–	–
4"	25	MC504	9.75	MC704	14.00	MC104	15.10	MC204	20.95	MC304	29.50
6"	25	MC506	13.75	MC706	19.00	MC106	20.95	MC206	29.50	MC306	41.50
8"	25	MC508	17.00	MC708	24.00	MC108	26.75	MC208	37.75	MC308	53.00
12"	25	MC512	24.50	MC712	33.75	MC112	38.00	MC212	54.75	MC312	77.00
<b>Per Inch of Length</b>			.140	–	.180	–	.190	–	.230	–	.290
<b>Laser/Ink Jet Inserts</b>											
Sheets/ Pkg	50	LI-508-26 3/8" x 8"	18.50 (1,300)	LI-708-18 5/8" x 8"	18.50 (900)	LI-108-12 13/16" x 8"	18.50 (600)	LI-208-6 1 1/8" x 8"	18.50 (300)	LI-308-3 3" x 8"	18.50 (150)

**CUSTOM LENGTHS AVAILABLE!** Standard Pkg: 25 pieces/package with white inserts

## write•on magnetic tags

**Quick, Easy, Inexpensive.** Write On/Wipe Off tags have a strong and durable magnetic (.030" thick) backing. The vinyl top coating makes marking with any standard **WET OR DRY ERASE** marker a "snap"! There are so many uses for these tags in any warehouse. Available in **WHITE OR COLORS.**

Length	Unit	1" Width Stock #	Price/ Pkg.	2" Width Stock #	Price/ Pkg.	3" Width Stock #	Price/ Pkg.
2"	25	MX102	8.00	–	–	–	–
3"	25	MX103	10.50	MX203	17.25	MX303	23.00
4"	25	MX104	13.00	MX204	21.75	MX304	29.00
6"	25	MX106	18.00	MX206	30.75	MX306	41.00
8"	25	MX108	23.00	MX208	39.75	MX308	53.00
12"	25	MX112	33.00	MX212	57.75	MX312	77.00
<b>Per Inch of Length</b>			.170	–	.260	–	.320

**CUSTOM LENGTHS AVAILABLE!** Standard Pkg: 25 pieces/package.



## magnetic roll stock



**Discover its 1,001 uses! Perfect for labels, signs, job tickets, and so much more.** Magnetize anything and everything with our selection! Four styles of magnetic roll stock will meet any of your identification needs. From the economical, plain magnet rolls to our write on **COLORS**, we have you covered and color-coded! All products can be cut to any length easily, using scissors.



Stock #	Type	Width	Length	Price/Roll
MC500	C Channel	1/2"	50 ft.	45.00
MC700	C Channel	3/4"	50 ft.	57.00
MC100	C Channel	1"	50 ft.	70.00
MC200	C Channel	2"	50 ft.	100.00
MC300	C Channel	3"	50 ft.	140.00
MP100	Plain	1"	50 ft.	35.00
MP200	Plain	2"	50 ft.	60.00
MP300	Plain	3"	50 ft.	80.00
SA500	Self-Adhesive	1/2"	100 ft.	60.00
SA100	Self-Adhesive	1"	100 ft.	110.00
SA200	Self-Adhesive	2"	100 ft.	175.00

Stock #	Type	Color	Width	Length	Price/Roll
MX100	Write On	White	1"	50 ft.	65.00
MX200	Write On	White	2"	50 ft.	110.00
MX300	Write On	White	3"	50 ft.	150.00
MX120	Write On	Green	1"	50 ft.	65.00
MX130	Write On	Blue	1"	50 ft.	65.00
MX140	Write On	Red	1"	50 ft.	65.00
MX150	Write On	Orange	1"	50 ft.	65.00
MX160	Write On	Yellow	1"	50 ft.	65.00
MX260	Write On	Yellow	2"	50 ft.	110.00
<b>Magnetic Tag Marker</b>					
STD-101	Wet Erase, Medium Point	Black	1 dozen		24.95





**Finally! A Universal Label Holder System for Plastic Bins and Totes.** Bin•Buddy's™ feature a newly engineered self-adhesive back that will adhere to **ANY** space age plastic or metal container. They offer a *quick and easy* means of changing labels every time the contents of a storage container changes. Just *reprint the Laser/Ink Jet Compatible Paper Cards* (included) and reinsert.

All Bin•Buddy's™ come with a **Bar Code Compatible Window** that protects the label from dirt and moisture. It also assures accurate scanning every time. Inserts provided are laser/ink jet compatible, pre-perforated with simple printing instructions.

Stock #	Size	Load	Application	Unit	Price/ Pkg.	Laser/Ink Jet Inserts Stock #	Price/ 50 sheets (qty)
BB-35	3" x 5"	Side	Totes	25	17.25	LI-35-4	18.50 (200)
BB-46	4" x 6"	Side	Totes	25	20.25	LI-46-2	18.50 (100)
BB-13	1" x 3"	Top	Bins	25	14.50	LIS-108-10	18.50 (500)
BB-24	2" x 4"	Top	Bins	25	18.50	LIS-208-5	18.50 (250)



CUSTOM SIZES AVAILABLE! Standard Box: as shown with laser inserts included.

## open•edge™



**Provide an "edge" in value.** The best value for high volume applications. The "Top Loading" feature is ideal for organizing **ANY** storage area. Can easily be cut with scissors to required length. Aggressive adhesive system assures our label holder will not fall off any clean dry surface. Made from clear, durable, heavy duty PVC that is bar code compatible. White inserts included. Magnetic and Hook & Loop backings available.

Stock #	Size	Unit	Price/ Pkg.	Laser/Ink Jet Inserts Stock #	Price/50 sheets (qty)
OE0506	½" x 6"	50	27.00	LI-216-20	18.50 (1,000)
OE1003	1" x 3"	50	16.50	LI-113-10	18.50 (1,000)
OE1006	1" x 6"	50	33.00	LI-116-10	18.50 (500)
OE2006	2" x 6"	50	39.50	LI-516-5	18.50 (250)
OE3005	3" x 5"	50	42.50	LI-35-4	18.50 (200)

Price Per Inch	
Width	Price
¾" or ½"	.10
¾" or 1"	.11
1½"	.13
2"	.15
3"	.18

CUSTOM LENGTHS AVAILABLE UP TO 36"! (See per inch price table.) Standard Package: as shown above.

## angleVision™ labelholders

*patent pending*

### Snap-on label holders for modular racks and work stations.

AngleVision™ combines a heavy duty, clear plastic insertable label holder with a flexible "C" channel snap that retrofits the .100" - .112" diameter tubing used by major work station manufacturers. Tilt holder to any desired angle for maximum visibility and snap it off to relocate.

Its top loading design accommodates a 2" x 4" label that is protected from dirt and moisture by a bar code compatible clear finish cover. To change a label simply re-mark and re-insert.



Stock #	Size	Color	Backing	Unit	Price/Pkg.
AV-2400	2" x 4"	Clear	Snap-on	25	30.50

Laser/Ink Jet Inserts	Size	Unit	Quantity	Price/Pkg.
LI-514-5	2" x 4"	50 sheets	500 inserts	18.50

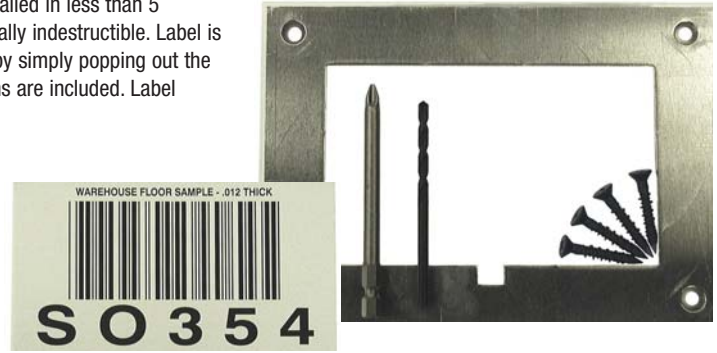
CUSTOM LENGTHS AVAILABLE. Standard Package: as shown above.



# floor label system

**Finally! A permanent solution for labeling floor storage.** Can be installed in less than 5 minutes. Aluminum frame with 3" x 5" custom imprinted anodized labels are virtually indestructible. Label is easily read even after extensive lift truck and pallet traffic. Label can be updated by simply popping out the old and inserting a new one. All hardware, frame, label, and installation instructions are included. Label artwork on diskette or e-mail required.

Stock #	Description	Order Qty.	Price/Ea.
5735FL	5" x 7" frame with 3" x 5" printed label and hardware	25 (min)	42.50
		50	28.75
		100	20.50
		200	18.25
		500	16.25



## warehouse aisle sign kit



**Now create your own customized warehouse aisle signs at a fraction of the cost!**

Warehouse sign posting starts in the aisle and there is NO better system than our **AISLE SIGN KIT**. This unique product snaps into pallet rack assembly holes—just snap out to relocate.

Print signs in house on laser/ink jet compatible paper which is included. Change a designation for only the cost of the paper! This very clever clear plastic sign holder features a soft plastic hinge which allows the sign to flex when bumped with no breakage. It can hold any type of paper stock or even plastic sign blanks up to .100" thick. Use two (2) holders for very large signs (over 11" x 17").



Ten (10) holders per package with twelve (12) Laser/Ink Jet sheets included within each box. Kit enables you to make up to ten (10) 11" x 8½" signs (single or doubled-sided). Each complete kit includes instructions. Optional sign colors as shown.

Stock #	Color	Backing	Unit	Price/Pkg.
WSK-1W	White	Snap-On	10	27.50
WSK-1Y	Yellow	Snap-On	10	27.50
WSK-1R	Red	Snap-On	10	27.50
WSK-1B	Blue	Snap-On	10	27.50
WSK-1G	Green	Snap-On	10	27.50

## hi•lo®

**End the Identity Crisis for high and low shelving.**

Hi•Lo® eliminates problems in identifying shelf contents in high or low places. This self-adhesive holder attaches to a shelf at a 45-degree angle. On a high shelf it "looks down" at you. On a low shelf it "looks up" at you, eliminating bending and stooping.

Hi•Lo® is a transparent, seamless label holder that is ideal for libraries, labs, warehouses, and other large storage areas. White paper inserts provided. **CUSTOM CUT LENGTHS AND MAGNETIC BACKED AVAILABLE.** Ten (10) per box standard. CLEAR ONLY.



Length	Unit	1/2" Width Stock #	Price/Pkg.	Price/Inch	3/4" Width Stock #	Price/Pkg.	Price/Inch	1" Width Stock #	Price/Pkg.	Price/Inch
2"	10	HL-22	5.75	.180	HL-32	6.25	.210	HL-12	7.25	.250
3"	10	HL-23	6.25	—	HL-33	7.25	—	HL-13	8.25	—
4"	10	HL-24	7.00	—	HL-34	8.25	—	HL-14	9.80	—
6"	10	HL-26	8.25	—	HL-36	10.40	—	HL-16	13.25	—
<b>Laser/Ink Jet Sheets</b>										
50 sheets		LI-21-20	18.50	1,000 inserts	LI-31-12	18.50	600 inserts	LI-11-10	18.50	500 inserts



# shelf labeling strips

**The quick change artists of labeling.** The top-loading design assures quick and easy label changes for 1/2" high label or insert. Clear label holder with self-adhesive backing adheres to any clean, dry surface. White inserts included. Custom cut lengths available. CLEAR ONLY.

Stock #	Size	Backing	Unit	Price/Pkg.	Laser/Ink Jet Inserts Stock #	Price/50 sheets (qty)
CL-1004	7/8" x 4"	Self-Adhesive	10	6.50	LI-21-20	18.50 (1,000)
CL-1204	7/8" x 4"	Self-Adhesive	200	92.00	—	—
CL-1006	7/8" x 6"	Self-Adhesive	10	9.50	—	—
CL-1012	7/8" x 12"	Self-Adhesive	10	18.50	—	—
<b>per inch pricing</b>				—	—	—



**CUSTOM LENGTHS AVAILABLE!** Standard Pkg: as shown. Magnetic & Hook/Loop Available!

**For wire baskets, containers, displays.** This clear plastic label holder is designed for use with these and other wire constructed items. Just snap it on and relocate as required. Changing a label is as simple as re-marking and re-inserting. 1 1/4" high label or insert loads from top and is **protected** by a **bar code compatible** cover. White inserts included. CLEAR ONLY.

Stock #	Size	Backing	Unit	Price/Pkg.	Price Per Inch
SL-1203	1 1/4" x 3"	Snap-On	25	14.00	.180
SL-1206	1 1/4" x 6"	Snap-On	25	28.00	

Laser/Ink Jet Inserts	Size	Unit	Quantity	Price/Pkg.
LI-120-8	1 1/4" x 6"	50 sheets	400 inserts	18.50

**CUSTOM LENGTHS AVAILABLE!** Standard Packaging as shown above.

## adapt•a•strip™

**Now, a label holder solution for WIRE DECKING!** This innovative, snap-on adapter strip is ideal for exposed 1/4" diameter (#4) wire waterfall and other similar decking products. Use it as either a card holder or attach it to one of our products to produce larger signage. Snap-On deck and relocate strip as necessary. Custom Cut Lengths Available. White Only.

Stock #	Size	Backing	Unit	Price/Pkg.
AD-06	1 1/2" x 6"	Snap-On	25	40.50
<b>per inch pricing</b>				—
				.275/inch

Laser/Ink Jet Inserts	Size	Unit	Quantity	Price/Pkg.
LI-208-6	1 1/2" x 8"	50 sheets	300 inserts	18.50

**CUSTOM LENGTHS AVAILABLE!** Standard Package as shown.



**Organize bins and shelves quickly and economically.** Clear cardholders in a "C" channel design to hold an insert card or label. The 7/8" width meets common automotive labeling specifications. White inserts included. Self-Adhesive or Magnetic backing. Hook & Loop available by special order. Also can be ordered without backing for drilling. Custom lengths available. CLEAR ONLY.

Size	Unit	Self-Adhesive Stock #	Price/Pkg.	Per Inch Price	Magnetic Stock #	Price/Pkg.	Per Inch Price	Laser/Ink Jet Inserts Stock #	Price/50 sheets (qty)
7/8" x 3"	25	PC-803	10.50	.140	PCM-803	15.00	.190	LI-108-12	18.50 (600)
7/8" x 4"	25	PC-804	13.75	—	PCM-804	19.50	—	—	—
7/8" x 6"	25	PC-806	19.00	—	PCM-806	26.50	—	—	—
7/8" x 12"	25	PC-812	34.50	—	PCM-812	47.50	—	—	—
1" x 3"	25	PC-103	12.00	.160	PCM-103	17.25	.230	LI-11-10	18.50 (500)
1" x 4"	25	PC-104	15.25	—	PCM-104	23.00	—	—	—
1" x 6"	25	PC-106	20.75	—	PCM-106	32.50	—	—	—
1" x 12"	25	PC-112	39.00	—	PCM-112	61.00	—	—	—

**CUSTOM LENGTHS AVAILABLE!** Standard Package as shown. Hook/Loop Backing available, call!

# moveable “shelf” labelholders



**No special mounting or attaching necessary.** The holders stay neatly in place even when items are moved over top. Can be used on any type of shelf: wood, metal, glass, and others. Unique bottom-loading design makes label changes a breeze! Can be easily moved to other locations as required, without marring the shelf. Made from “crystal clear” PVC with white label background. Paper inserts included.

Stock #	Description	Color	Unit	Price/Pkg.
<b>BS-5108</b>	¾" high x 5" wide x 8" deep	Clear	10	16.75

Laser/Ink Jet Inserts	Size	Quantity	Unit	Price/Pkg.
<b>LIS-758-12</b>	1½" x 8"	50 sheets	600 inserts	18.50

## shelf•clip™

**Quick & Easy label designation system for wood or metal shelving!** The quick and easy way to mark either ¾" or 1" width wood or metal shelving. Non-Marring, Clear Plastic label holders allow relocation of labels and cost-effective designation changes. Our flexible clear plastic clips over the shelf while the closed end protects label for neat appearance. This product can be used in offices, libraries, store rooms and any other place where wood/metal shelving is used and items have the potential to be moved. Many point of purchase displays use a similar-type product.

Stock #	Size	Shelf Width	Unit	Price/Pkg
<b>WSC-1006</b>	¾" x 6"	¾"	10	18.50
<b>WSC-1186</b>	1½" x 6"	1"	10	25.75

<b>LI-1006-10</b>	¾" x 6"	50 sheets	500 inserts	18.50
<b>LI-1186-8</b>	1½" x 6"	50 sheets	400 inserts	18.50



# mag•print™



**Mag•Print™ is an industry first! Now, you can print your own magnetic labels, business cards, and signs!** No more fumbling or mess with typical self-adhesive labels. These magnetic sheets are designed to work with virtually any desktop printer. They feature a printable face in either an Ink Jet or Laser compatible finish.

Do-it-yourself labels, signs, and much more are now quick and easy to make. Printing instructions included in each package. Custom perforating available by special order (1,000 sheet minimum). WHITE ONLY. **(Caution: Do not use IM-811 in laser printers.)**

Laser Finish				Ink Jet Finish			
Stock #	Size	Unit	Price/Pkg.	Stock #	Size	Unit	Price/Pkg.
<b>LM-811</b>	Letter	12	36.00	<b>IM-811</b>	Letter	12	36.00

Standard Package: as shown above. LM811 is suitable for bar code printing.

# laser/ink jet sheets

**Improved laser/ink jet inserts.** All sheets are now letter size (8½" x 11"). Sheet comes pre-perforated. High quality white laser paper used for all products. Packages come with laser sheets and general formatting and printing instructions. 50 sheets per pack. Sold in individual packs. White only. See each individual product for specific stock numbers and pricing.

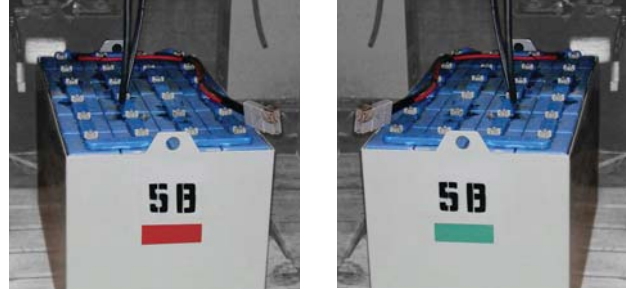
Custom Perforating and **COLORS** available by Special Order!



# CHARGED•Card™

patent pending

The easiest way ever to tell if your Lift Truck Batteries are Charged or Need Re-Charging. Our unique 2-sided, color coded magnet (red = needs charging – green = ready to go!) adheres to any metal surface on the lift truck, battery charger, or metal battery case. The Charge Card has a Write-On / Wet Erase finish on both sides for labeling designations if required. Can be scissor cut to any size on location. You will never have to ask “IS THIS BATTERY CHARGED?” ever again.



Stock #	Size	Unit	Price/Pkg.
CCM-0206	2" x 6"	10	15.95

## Frig•ID™ Laser Sheets

**NEW** FINALLY! A Cost Effective Solution for Labeling Low Temperature Storage

**Applications!** Print laser labels on demand in ANY quantity! Permanent adhesive becomes more aggressive as temperature drops below 32°F. Minimum application temp -20°F. Surface must be flat, clean and dry for best results. Letter Size, Portrait format in three (3) popular sizes shown below. White, Heavy Duty Label stock. 25 sheets with printing instructions per package.

Stock #	Size	Unit	Labels/Pkg.	Price/Pkg
LT13	1" x 3"	25	500	31.50
LT24	2" x 4"	25	250	31.50
LT35	3" x 5"	25	75	31.50



## wire•rac™ Med Label Holders

NOW, Aigner has an Affordable Label Holder Compatible with Cari-All™ shelving!

**NEW**

New 1¼" x 3" universal label holder snaps on and off for easy relocation. Clear PVC window protects label or bar code. Special matte finish assures accurate scanning. Proprietary design loads from the bottom and accommodates any label, sign or message. White Inserts included, optional Laser Inserts shown below. 25 holders per package.



Stock #	Size	Backing	Unit	Price/Pkg
WRH-1253	1¼" x 3"	Snap-on	25	34.00
Laser / Ink Jet Sheets				
LI-123-8	1¼" x 3"	50 sheets	800 inserts	18.50

CARI-ALL™ is a registered trademark of Cari-All Products, Inc.

## Terms and Conditions

- Contact your nearest Industrial Supply Dealer or view our complete distributor list at [www.aignerindex.com](http://www.aignerindex.com) or [www.holdex.com](http://www.holdex.com).
- Open account available to qualified distributors. Standard Terms: Net 30 days.
- All other terms & conditions, please visit [www.aignerindex.com](http://www.aignerindex.com), click on “contact us link” on menu bar.

All trademarks and/or registered trademarks, brand names and patents are the property of Aigner Index, Inc. Pricing contained within is subject to change at any time as determined by Aigner Index, Inc. All material herein Copyright © 2006, Aigner Index, Inc. All rights reserved.

to place an order call 1-800-242-3919, fax 845-562-2638 or visit [www.aignerindex.com](http://www.aignerindex.com)



***Distributed By:***

